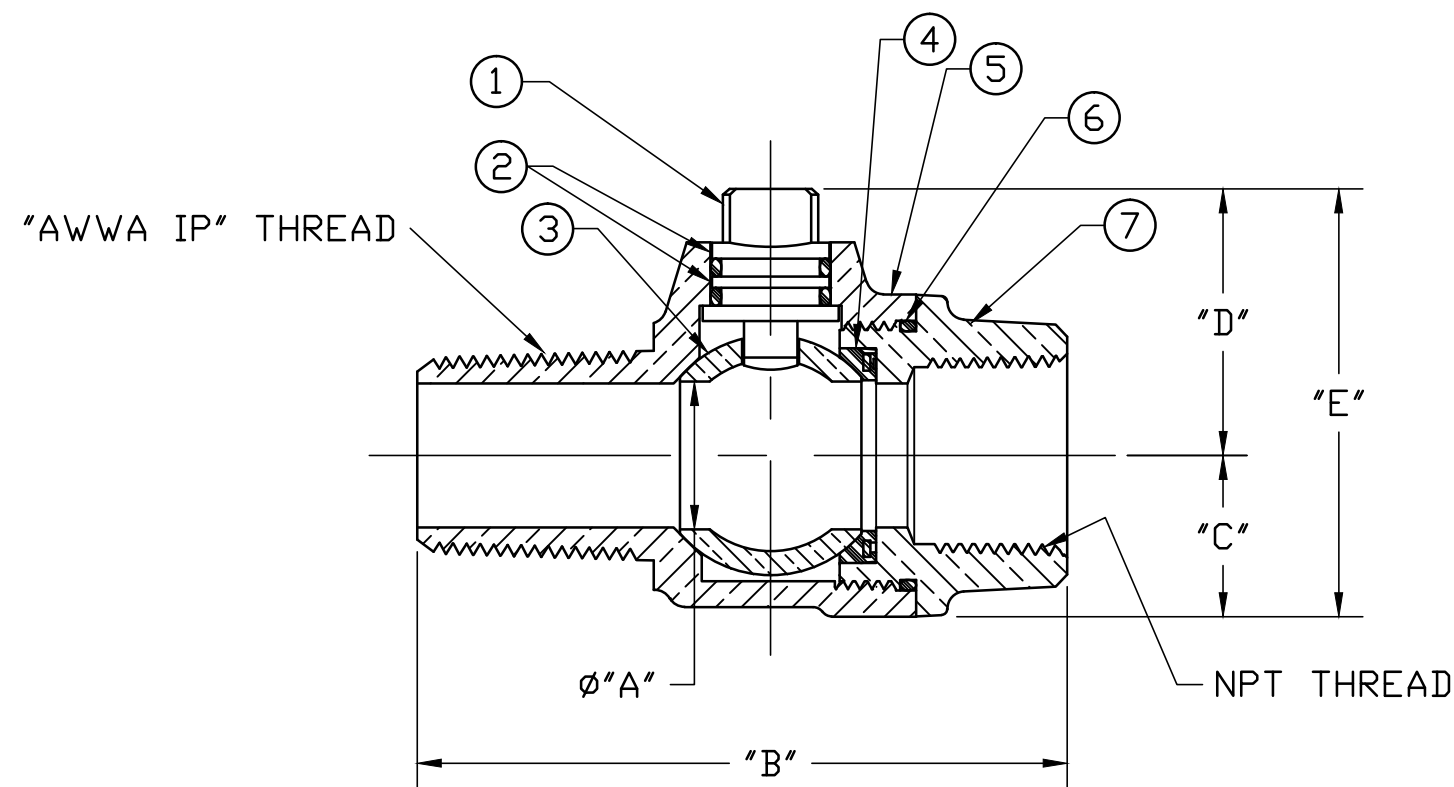


No.	QTY.	DESCRIPTION	MATERIAL
1	1	STEM	LOW LEAD BRASS ALLOY
2	2	O-RING	EPDM D2000
3	1	BALL	LOW LEAD BRASS ALLOY
4	1	GASKET - SEAL	NITRILE D2000
5	1	BODY	CAST LOW LEAD BRASS ALLOY
6	1	O-RING	EPDM D2000
7	1	END PIECE	CAST LOW LEAD BRASS ALLOY



SIZE	ØA	B	C	D	E
3/4	.75	3.38	.84	1.36	2.20
3/4x1	.75	3.62	.84	1.39	2.23
1	1.00	4.11	1.15	1.56	2.71
1-1/2	1.50	4.78	1.50	2.12	3.62
2	2.00	5.33	1.82	2.44	4.26

ALL WETTED PARTS ARE LOW LEAD BRASS ALLOY

FILEPATH: PROD-ENG\JJ\SUBMITTALS\E1931

REV	ECR	DESCRIPTION	DATE	BY	CHKR	DRFTR	JGarvin	12/14/09	<b>JONES</b> UNLESS OTHERWISE NOTED SURFACE PREPARATION: BREAK CORNER(S) ---- .000 SURFACE FINISH -- XX RMS TOLERANCE(S): LINEAR ----- ± .000 ANGULAR ----- ± 0°00'		THIRD ANGLE PROJECTION	
									BY	DATE	REF. No.	SCALE
									STK No:			
									MAT'L:			
									DESCR.	BALL TYPE LLB CORP VALVE (MIP x FIP)	DWG NUMBER	E1931

DWG NUMBER  
E1931  
JJ-MRKTG

TITLE TO AND OWNERSHIP OF THIS ENGINEERING DATA REMAINS IN Mueller Co. NO USE IS TO BE MADE OF THIS DATA EXCEPT AS SPECIFICALLY AUTHORIZED BY Mueller Co. ASSENT ON THE PART OF THE RECIPIENT TO THESE CONDITIONS IS PRESUMED