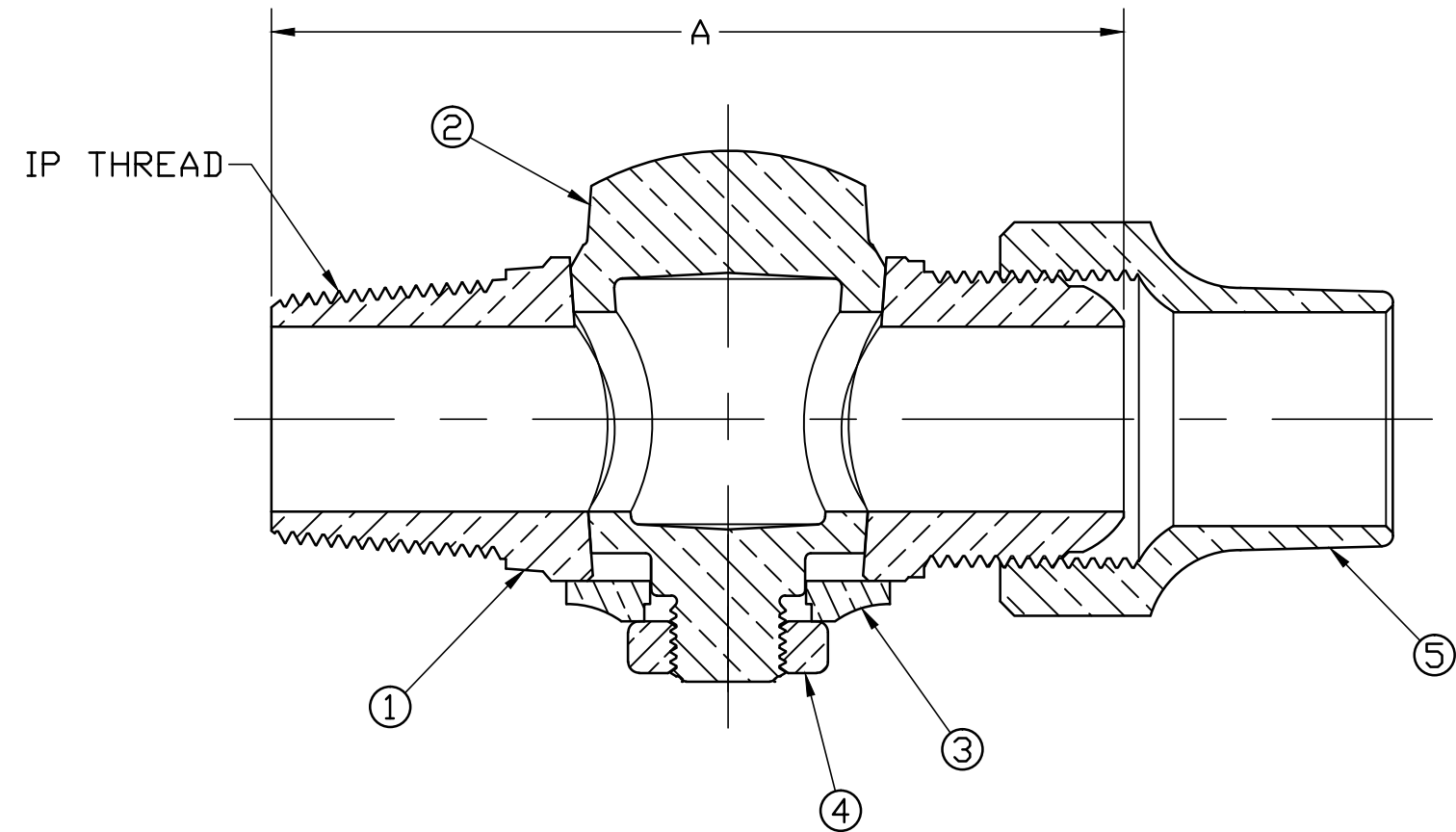


No.	DESCRIPTION	MATERIAL
1	BODY	CAST LOW LEAD BRASS ALLOY
2	KEY	CAST LOW LEAD BRASS ALLOY
3	KEY WASHER	CAST BRASS ASTM B62 ALLOY C83600
4	KEY NUT	CAST BRASS ASTM B62 ALLOY C83600
5	COPPER TUBE NUT	CAST BRASS ASTM B62 ALLOY C83600



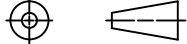
SIZE	A
3/4	3-27/32"
1	4-39/64"

ALL WETTED PARTS ARE LOW LEAD BRASS ALLOY

FILEPATH: PROD-ENG\JJ\SUBMITTALS\E1505

DWG NUMBER  
E1505  
JJ-MRKTG

TITLE TO AND OWNERSHIP OF THIS ENGINEERING  
DATA REMAINS IN Mueller Co. NO USE IS TO BE  
MADE OF THIS DATA EXCEPT AS SPECIFICALLY  
AUTHORIZED BY Mueller Co. ASSENT ON THE PART  
OF THE RECIPIENT TO THESE CONDITIONS IS PRESUMED

						DRFTR	RWB	2/26/10	<b>JONES'</b>		
						CHKR					
						ENGR					
						MGR					
									UNLESS OTHERWISE NOTED	THIRD ANGLE PROJECTION	
									SURFACE PREPARATION:		
									BREAK CORNER(S) ---- .000		
									SURFACE FINISH -- 000 RMS	REF. No.	
							BY	DATE	TOLERANCE(S):		SCALE
									LINEAR ----- ± .000	FULL	
									ANGULAR ----- ± 0°00'		
						STK No:					
						MAT'L:					
						DESCR.					
						GROUND KEY LLB CORPORATION VALVE					DWG NUMBER
						("IP" x CS)					E1505
REV	ECR	DESCRIPTION	DATE	BY	CHKR						