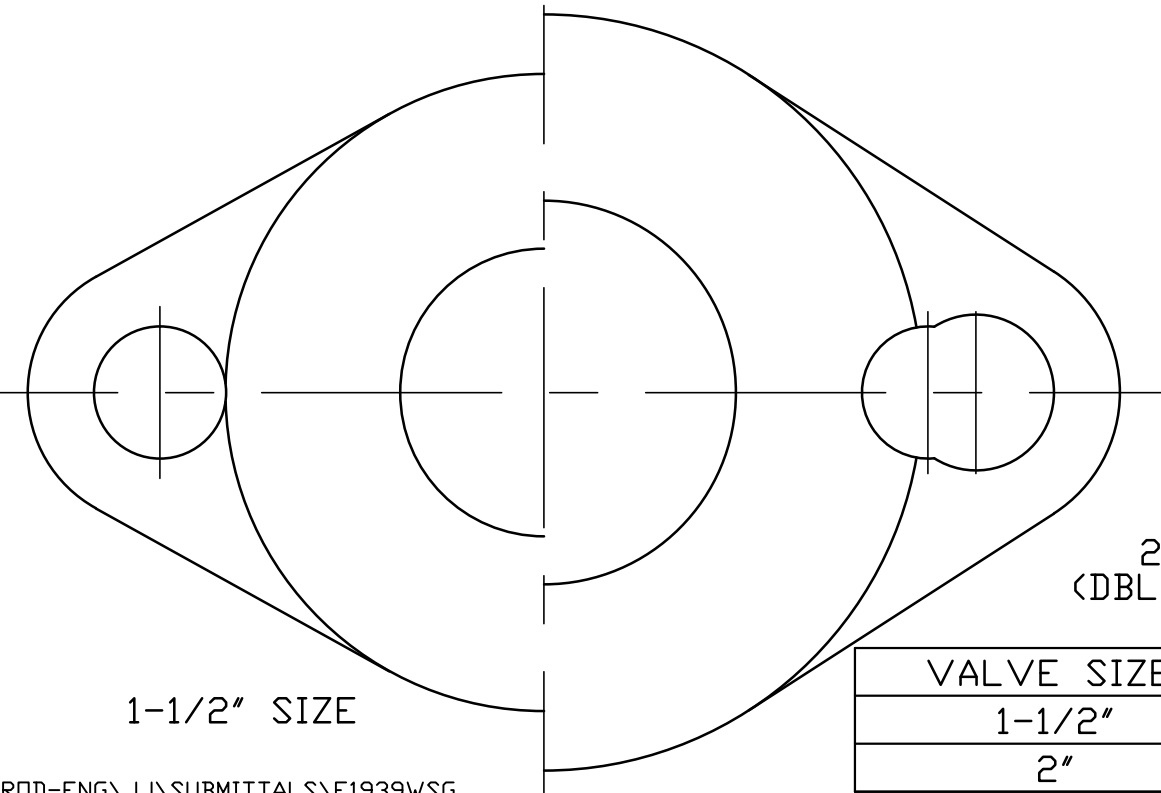
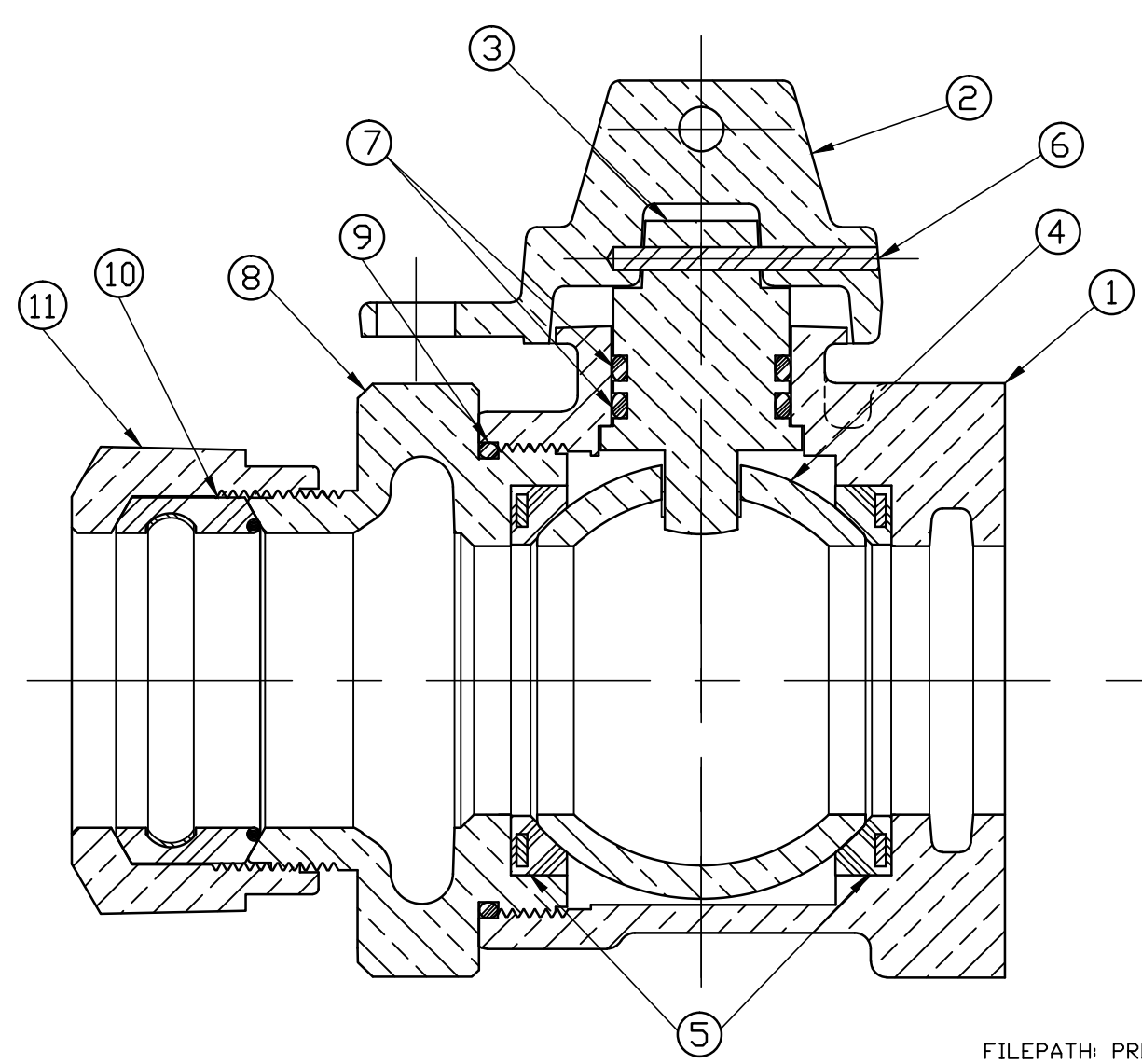


No.	DESCRIPTION	MATERIAL DESCRIPTION
1	BODY	CAST LOW LEAD BRASS ALLOY
2	CAP	CAST BRASS ASTM B62 ALLOY C83600
3	STEM	LOW LEAD BRASS ALLOY
4	BALL	LOW LEAD BRASS ALLOY
5	GASKET	NITRILE ASTM D2000
6	SOLID PIN	AISI 304 ANNEALED STAINLESS STEEL
7	O-RING	EP ASTM D2000
8	END PIECE	CAST LOW LEAD BRASS ALLOY
9	O-RING	EP ASTM D2000
10	CTS GSKT SUB	SBR ASTM D2000 -GSKT 410ss -BAND
11	CONNX NUT	CAST BRASS ASTM B62 ALLOY C83600



2" SIZE  
(DBL DRILLED)

VALVE SIZE	A
1-1/2"	4-15/64"
2"	5-41/64"

ALL WETTED PARTS ARE LOW LEAD BRASS ALLOY

FILEPATH: PROD-ENG\JJ\SUBMITTALS\E1939WSG

DRFTR	RWB	2/4/10
CHKR		
ENGR		
MGR		
BY	DATE	
STK No:		
MAT'L:		
DESCR.		

**JONES**

UNLESS OTHERWISE NOTED THIRD ANGLE PROJECTION

SURFACE PREPARATION:  
 BREAK CORNER(S) ---- .000  
 SURFACE FINISH -- XX RMS

TOLERANCE(S):  
 LINEAR ----- ± .000  
 ANGULAR ----- ± 0°00'

REF. No. SCALE

TITLE TO AND OWNERSHIP OF THIS ENGINEERING DATA REMAINS IN Mueller Co. NO USE IS TO BE MADE OF THIS DATA EXCEPT AS SPECIFICALLY AUTHORIZED BY Mueller Co. ASSENT ON THE PART OF THE RECIPIENT TO THESE CONDITIONS IS PRESUMED.

REV	ECR	DESCRIPTION	DATE	BY	CHKR

DESCR.	BALL STRAIGHT LLB METER VALVE (110 CTS x METER FLANGE)	DWG NUMBER	E1939WSG
--------	---	------------	----------

DWG NUMBER  
E1939WSG  
JJ-MRKTNG